

Aichi Prefectural Ichinomiya Junior High School

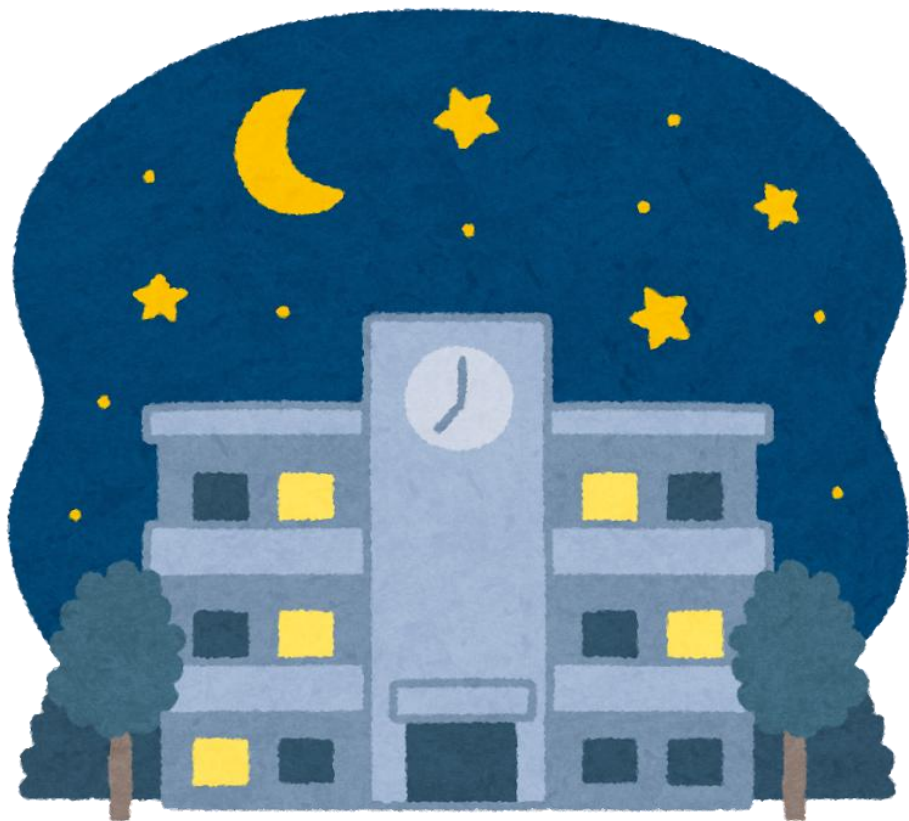
School Information Session

Tuesday, August 5, 2025
at Aichi Prefectural Ichinomiya High School

Introduction of Ichinomiya Junior High School

Date of opening

April 2026



The students who are eligible to enter the school①

People living in Aichi Prefecture
or
People working in Aichi Prefecture



People born by April 1, 2011

The students who are eligible to enter the school②

People who have not completed compulsory education in Japan or overseas.

or

People who graduated from junior high school without receiving enough education owing to various circumstances.

The Vision of Ichinomiya Junior High School

Ichinomiya Junior High School
aims to be a warm-hearted school
where students can learn with
peace of mind for “happiness”.

"Happiness" means Well-being (happiness of students,
people around them, and society as a whole).

We want Students to be



- who can learn without giving up.
- who can take care of each other.
- who can play an active role
as members of society

What you will learn

Students will learn the same subjects as daytime junior high school.

Japanese Language Social Studies
Mathematics Science English Music Arts
Health and Physical Education
Technology&Home Economics
Integrated Studies Moral Education
Special Activities

※You can also learn Japanese and relearn elementary school learning.

Grade

1st Grade

2nd Grade

3rd Grade

Choose one of
the grades and
belong to it.

Students will be divided into 5 courses and study for 1 year.

- Learning content at the level(Approximately)
- Basic 1st grade of junior high school
 - Standard 2nd grade of junior high school
 - Challenge 3rd grade of junior high school
 - Japanese Beginner for Japanese beginner & elementary Japanese learner
 - Japanese Basic for elementary & intermediate Japanese learner

What you'll learn in each course

	Elementary School	1st	Junior High school	2nd	3rd
Basic					
Standard					
Challenge					
Japanese Beginner					
Japanese Basic					

Not only learning Japanese but learning all subjects using textbooks.

Teaching Staff

Classes will be taught by teachers with junior high school teaching license.

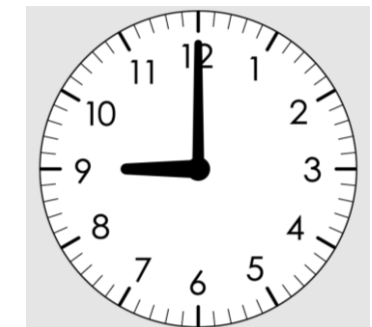


Schedule

Start time(pm)



End time(pm)



Homeroom

PM **5:15~ 5:25**

1st

5:25~ 6:05(40min)

(School Lunch)

※applicants only

6:05~ 6:35

2nd

6:35~ 7:15(40min)

3rd

7:25~ 8:05(40min)

4th

8:15~ 8:55(40min)

Homeroom

8:55~ 9:00

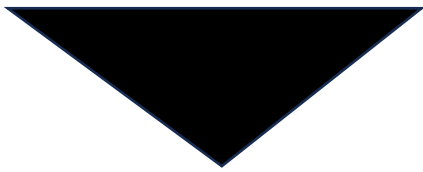
Expenses

You don't need to pay tuition & textbook fees
provided by the government.

- We will collect about 1,000 yen every month for workbooks, notebooks, and school events , etc.
- We will collect 5,700 yen every month for school lunches. ✕applicants only
- Transportation expenses are paid by each person.
✕Student discounts for railway & bus can be available.

Flow of Admission

Request an interview



Sep.17th to Dec.5th

- Internet (from HP)
- Telephone(Tel:052-954-6315)
※Japanese only

Interview at Ichinomiya High School Oct.1st to Dec.12th

- Be sure to bring your application for admission.

Flow of Admission

Entrance exams and
document screenings
are not required for enrolling.

We will have individual interviews
for applicants.

Flow of Admission

In 2025				In 2026			
Sep.	Oct.	Nov.	Dec.	Jan.	Feb.	Mar.	Apr.
<div>Student Recruitment Sep.17th to Dec.5th</div> <div>Interview & Submission of application Oct.1st to Dec.12th</div>				Admissions Decision		Admissions Information Session	Opening & Entrance Ceremony

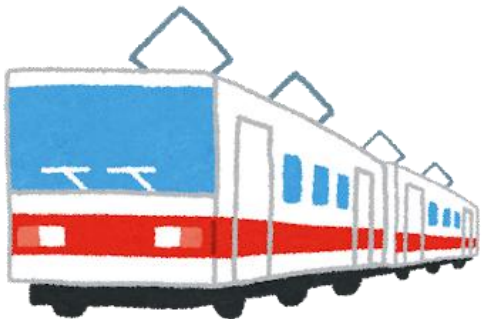
Facilities & Access

In the building of
Aichi Prefectural
Ichinomiya High School



<https://ichinomiya-njh.aichi-c.ed.jp/cms/>

Ichinomiya Junior
High School HP



JR or Nagoya Railway
About 20 minutes walk from
Ichinomiya Station.

Inquiries

Aichi Prefectural Board of Education

Aichi Learning Division



TEL:052-954-6315



Email: ichinomiya-njhs@pref.aichi.lg.jp